

# MEG TURNER

# TUFF ENUFF

## PHOTOGRAVURE PRINTS FROM ORIGINAL TINTYPE PLATES.



*SELF PORTRAIT 2, 2015*

PHOTOGRAVURE ON YUKU-SHI JAPANESE PAPER  
PRINTED 2016.

25 1/2 x 18 3/4 IN.

SIGNED & NUMBERED 1/15 AU RECTO.

\$750 UNFRAMED.



*SELF PORTRAIT, 2015*

PHOTOGRAVURE ON YUKU-SHI JAPANESE PAPER  
PRINTED 2016.

25 1/2 x 18 3/4 IN.

SIGNED & NUMBERED 1/15 AU RECTO.

\$750 UNFRAMED.



*COURTNEY - THE UNSEEN BOXER 1, 2015*

PHOTOGRAVURE ON YUKU-SHI JAPANESE PAPER  
PRINTED 2016.

25 1/2 x 19 7/8 IN.

SIGNED & NUMBERED 1/15 AU RECTO.

\$750 UNFRAMED.



*COURTNEY - THE UNSEEN BOXER 2, 2015*

PHOTOGRAVURE ON YUKU-SHI JAPANESE PAPER  
PRINTED 2016.

25 1/2 x 20 5/8 IN.

SIGNED & NUMBERED 1/15 AU RECTO.

\$750 UNFRAMED



*KAI, 2015*

PHOTOGRAVURE ON YUKU-SHI JAPANESE PAPER  
PRINTED 2016.

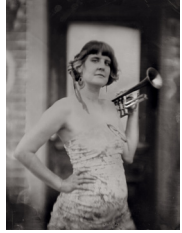
25 5/8 x 19 3/4 IN.

SIGNED & NUMBERED 1/15 AU RECTO.

\$750 UNFRAMED



**ZIBBY, 2015**  
PHOTOGRAVURE ON YUKU-SHI JAPANESE PAPER  
PRINTED 2016.  
25 1/2 x 19 3/4 IN.  
SIGNED & NUMBERED 1/15 AU RECTO.  
\$750 UNFRAMED



**KATE, 2015**  
PHOTOGRAVURE ON YUKU-SHI JAPANESE PAPER  
PRINTED 2016.  
25 1/2 x 19 3/8 IN.  
SIGNED & NUMBERED 1/15 AU RECTO.  
\$750 UNFRAMED



**MEREDITH AND JOHN - MY WYFE AND HER WYFE, 2015**  
PHOTOGRAVURE ON YUKU-SHI JAPANESE PAPER  
PRINTED 2016.  
19 1/8 x 25 3/4 IN.  
SIGNED & NUMBERED 1/15 AU RECTO.  
\$750 UNFRAMED



**YASSI AND ALICIA IN THEIR HOME-MADE CANOE, 2015**  
PHOTOGRAVURE ON YUKU-SHI JAPANESE PAPER  
PRINTED 2016.  
18 1/2 x 25 1/2 IN.  
SIGNED & NUMBERED 1/15 AU RECTO.  
\$750 UNFRAMED



**MEREDITH, 2015**  
PHOTOGRAVURE ON YUKU-SHI JAPANESE PAPER  
PRINTED 2016.  
25 1/2 x 19 3/4 IN.  
SIGNED & NUMBERED 1/15 AU RECTO.  
\$750 UNFRAMED



**MEREDITH - MY WYFE AND HER MOTORCYCLE, 2015**  
PHOTOGRAVURE ON YUKU-SHI JAPANESE PAPER  
PRINTED 2016.  
25 1/2 x 18 1/8 IN.  
SIGNED & NUMBERED 1/15 AU RECTO.  
\$750 UNFRAMED



**CASE - MAYOR MARSHMELLOW AND THE BYWATER KITTEN BOYS, 2016**  
PHOTOGRAVURE ON YUKU-SHI JAPANESE PAPER  
PRINTED 2016.  
25 1/2 x 19 3/4 IN.  
SIGNED & NUMBERED 1/15 AU RECTO.  
\$750 UNFRAMED.

**RACHEL DAVID**  
*LOVE HARD* KNUCKLE RINGS  
DAMASCUS STEEL  
2016  
\$2000

**RACHEL DAVID**  
*TUFF ENUFF* KNUCKLE RINGS  
DAMASCUS STEEL  
2016  
\$2000



*MAMA, 2014*  
PHOTOGRAVURE ON YUKU-SHI JAPANESE PAPER  
PRINTED 2016.  
25 5/8 x 19 3/4 IN.  
SIGNED & NUMBERED 1/15 AU RECTO.  
\$750 UNFRAMED



*VANESSA, 2015*  
PHOTOGRAVURE ON YUKU-SHI JAPANESE PAPER  
PRINTED 2016.  
25 3/8 x 19 1/2 IN.  
SIGNED & NUMBERED 1/15 AU RECTO.  
\$750 UNFRAMED



*SOMETIMES WE CALL IT GOTH BEACH 4, 2015*  
PHOTOGRAVURE ON YUKU-SHI JAPANESE PAPER  
PRINTED 2016.  
25 1/2 x 19 3/4 IN.  
SIGNED & NUMBERED 1/15 AU RECTO.  
\$750 UNFRAMED



*SOMETIMES WE CALL IT GOTH BEACH 2, 2015*  
PHOTOGRAVURE ON YUKU-SHI JAPANESE PAPER  
PRINTED 2016.  
25 1/2 x 19 1/2 IN.  
SIGNED & NUMBERED 1/15 AU RECTO.  
\$750 UNFRAMED



*SOMETIMES WE CALL IT GOTH BEACH 1, 2015*  
PHOTOGRAVURE ON YUKU-SHI JAPANESE PAPER  
PRINTED 2016.  
25 3/4 x 20 1/4 IN.  
SIGNED & NUMBERED 1/15 AU RECTO.  
\$750 UNFRAMED



*SOMETIMES WE CALL IT GOTH BEACH 5, 2015*  
PHOTOGRAVURE ON YUKU-SHI JAPANESE PAPER  
PRINTED 2016.  
25 3/4 x 19 1/4 IN.  
SIGNED & NUMBERED 1/15 AU RECTO.  
\$750 UNFRAMED



*SOMETIMES WE CALL IT GOTH BEACH 3, 2015*  
PHOTOGRAVURE ON YUKU-SHI JAPANESE PAPER  
PRINTED 2016.  
25 5/8 x 19 5/8 IN.  
SIGNED & NUMBERED 1/15 AU RECTO.  
\$750 UNFRAMED



*OWEN, 2015*  
PHOTOGRAVURE ON YUKU-SHI JAPANESE PAPER  
PRINTED 2016.  
25 5/8 x 19 3/4 IN.  
SIGNED & NUMBERED 1/15 AU RECTO.  
\$750 UNFRAMED

**EDITION PRICING:**

1 - \$750  
2-5 - \$900  
6-10 - \$1500  
11-14 - \$2000  
15 - TBD

**SCOTT EDWARDS GALLERY**  
2109 DECATUR ST. AT FRENCHMEN, NEW ORLEANS  
SCOTTEEDWARDSGALLERY.COM (504)610-0581